



NASBE NEWSLETTER

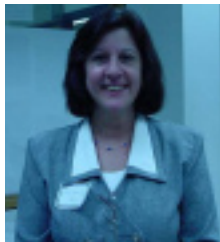
National Association of Supervisors for Business Education

Website: <http://www.nasbe.us> (Barb Beadle, webmaster)

President's Corner.....

Lee Marcoux

It is with great pleasure that I serve as your new NASBE President! I am very excited about meeting with all the Business Education Supervisors at our annual meeting at ACTE in Las Vegas on December 12-15, 2007 and again at the NBEA Conference in San Antonio, Texas in March, 2008. What great opportunities for us to meet and discuss educational topics that affect us in each state; and to learn that even though we live in different areas of this great country we have similar issues and concerns.



In Connecticut, we now have a new commissioner and a re-organization that has transferred our Career and Technical Education Unit to the Bureau of Curriculum and Instruction. We are delighted with this change since we in CTE are curriculum specialists and should be with our department's curriculum bureau. This change has brought about a focus on academic integration in our CTE areas. We are now collaborating with are colleagues to write lesson plans that integrate reading and writing skills. These lesson plans will give our teachers a guide so that they can continue to infuse rigor, relevance, and relationships as they educate our students.

I am looking forward to the ACTE Conference in Las Vegas with excellent speakers and many professional development opportunities. The speakers include Ruby Payne author of A

--continued in column 2--

President's Corner, continued from column 1

Framework for Understand Poverty and Erik Weihenmayer, the only blind man in history to reach the summit of Mount Everest. Some of the workshops in the Business Education Division are:

- Incorporating Leadership and Team-building in Your Classroom;
- Financial Literacy for Teens: Learn Now or Pay Later;
- Integrating Reading Strategies into the CTE Classroom;
- Problem-Based Entrepreneurship Learning;
- Teaching Strategies to Build a Career Technical Business program; and

continued on p. 2

Table of Contents

Article	Page #
President's Corner.....	1-2
Business Professionals BPA.....	3
Nebraska News - Pay Pal.....	4
ACTE Bus. Division Schedule	5-6
Jane Thompson, NBEA Past President	6
Websites	7
FBLA/PBL Information	8-9
MARK-ED Information.....	10-11
NASBE Nomination Form Leadership Award.....	12-13
BE Division President letter.....	14
NASBE Officer Nomination Form	15
ACTE Student Bus. Ed. Division Awards.....	16-19
Membership Form & Information	20-21
Committee Information, Upcoming Dates	22
Officer Information	23

President's Corner

continued from Page 1

- Why do I need to know Math? Strategies for Improving Math Skill through CTE.

These are just a glimpse of the outstanding workshops on current and cutting edge information in Business Education!

The popular NASBE Rap Session will be held on Wednesday, December 12 at 3:30 PM until 5:00 PM in the Convention Center, N253. This is the most valuable session that you can attend as a state supervisor since this is where we share ideas and discuss the current issues affecting business education across the nation. Plan to arrive early so you do not miss this session. The NASBE executive board meeting will be held on Saturday, December 15, 7:30 AM to 8:30 AM in Conference Room 1, Hilton; and the business meeting will be held on Saturday, December 15, 2:15 PM to 3:15 PM in Convention Center, N237. Please mark your calendars and plan to attend these meetings.

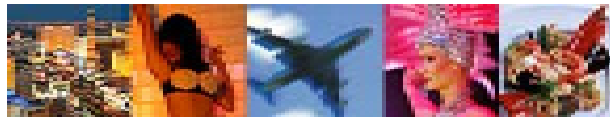
As I begin as President of NASBE, I would like to thank the immediate past president, Kara Burkett and her officer team for their hours of dedication and commitment to business education. I would like to personally thank Kara for her mentorship and patience as she prepared me to take over as president. I would also like to thank, Jean Kyle for her guidance and suggestions through this process. I would like to recognize my officer team and congratulate them on their new positions and to thank them in advance for their support. Please let me know if you have any suggestions or ideas to improve communication in our NASBE organization since this will be my main focus as your president. I would like to wish the members of NASBE a successful school year as we work together to prepare our students for the global economy!

NASBE Webmaster

Barb Beadle (IN Dept. of Ed.)



LAS VEGAS, NEVADA



Note From Barb Beadle Web Site Manager

I would like to get NASBE people to pay dues through the registration form on the web site at <http://nasbe.us>.

If anyone has any **changes** for the web site, they should send them directly to me.

Business Professionals of America

Finding Your Fit in Tomorrow's Workplace

Judith McKinstry, Chair

Board of Trustees

Our mission is to ensure that our student members find success as tomorrow's professionals in all areas of business: management, finance, human resources, information technology, marketing, operations and administration. While our goals continues to be leadership training, providing opportunities to compete using real workplace skills and recognizing community service - we now realize the need for other initiatives.



Based on research and input from our corporate partners we have begun to provide relevant on-line training in fields with projected high growth career opportunities. This year we are introducing an insurance program that will provide web based training, competitive events and an industry certification for our students. Careers in non-profit and data analysis are in the planning stages.

The information technology competitive events have been revised to provide more opportunities for students to demonstrate their technology aptitude by solving real workplace problems. There are opportunities for more hands-on competition and emerging areas such as computer animation are being piloted.



While content knowledge in our four interest areas: finance, administrative support, information technology and marketing/management/HR is necessary - it is not enough to ensure success. Current research from companies across a wide spectrum indicates that our schools have focused on content and technology to the exclusion of providing training and opportunities to practice the "soft skills" necessary to compete in the marketplace and contribute in the community. Business is seeking associates who can effectively communicate at all levels, efficiently function as team members and creatively solve problems.

Our national, student developed 2008 theme is "**Find Your Fit**". As an organization we have committed to developing web based learning, linking leadership, communication and problem solving competencies to our Workplace Skills Assessment Program and providing meaningful opportunities for our members to develop "soft skills" in conjunction with their technical knowledge. Business Professionals of America students will understand that technology is a tool and they will have the skills necessary to use that tool productively to find their fit in a dynamic and competitive workplace.

PayPal and eBay in the Classroom

By Jason Miner

Community Education Specialist, PayPal

Now entering its second year as a statewide program in Nebraska, the PayPal & eBay in the Classroom project has signed up its newest roster of schools. Last year's schools ranged in size from Class A all the way to Class D-2, and utilized the curriculum to bring 21st century business techniques into classrooms around the state. For the past two years, invitations to participate have been handed out in a panel about the curriculum at the state Nebraska Career Education Conference.

The program was developed in Nebraska at PayPal's LaVista campus as a way to teach students online business and life skills ranging from Business Math to Digital Photography to Public Relations and Copywriting. Participating schools are given a one-day orientation at PayPal's offices, where they are walked through the presentations, teachers' edition and the process of selling on eBay and collecting payments through PayPal. After being certified on the content, they are free to utilize the materials in their classrooms or with extracurricular groups. Students apply the skills they are taught through hands-on activities that culminate in creating all of the elements of an eBay listing. Teachers then list and sell the items on eBay (to meet the company's requirements that account holders are 18 years of age) and can apply the funds generated through successful sales as they choose. The goal of the program is not just to educate students about the workings of eBay and PayPal, but to teach life skills that will be of benefit no matter what career path a student eventually chooses to travel.

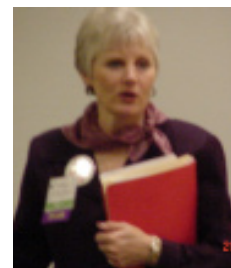
The program was piloted at Westside Middle School in 2005-06 and rolled out statewide for the 2006-07 school year. Teachers had a variety of classes take part in the project, and each found unique ways to leverage the flexible curriculum for their own schools' needs. One school partnered with a local charity thrift store to find the merchandise to sell, another

school sold parts and supplies from outdated school equipment and another raised funds for a charity that the class chose. Many of these schools are planning on participating again and making this an ongoing part of their business classes.

This year's schools are again diverse in school size and geography. As with last year's participants, each new school will receive a site visit of up to one full school day from PayPal, offering the ability for students to get advice on listings and have questions answered about future careers. Last year, PayPal staff traveled over 2,600 miles to accommodate the schools taking part.

Program developer Jason Miner, who is a Community Education Specialist with PayPal, has guided the project from its inception and receives support from other PayPal employees in various departments. "It has been so exciting to see this grow into a statewide project. Each teacher has taken the basic knowledge from the materials we provide and found a way to leave their own unique mark on the curriculum." Based on the success of the program from teacher and student input, it may not remain a one-of-a-kind opportunity for Nebraska schools for long. "Ideally, we'll be able to expand this into a regional and national program to support the entrepreneurs and online merchants of the future," said Miner.

After two years as a statewide project in Nebraska, the goal for the future is to expand the program regionally and ultimately, nationally. Jason will provide information through a panel session planned for the 2008 Mt. Plains Business Education Conference on June 18-21 in Lincoln at the Embassy Suites.



Bonnie Sibert Nebraska D.E.

Business Education Division SCHEDULE

DECEMBER 12-15, 2007 - LAS VEGAS, NEVADA

WEDNESDAY, DECEMBER 12

1:00 PM-3:15 PM

Business Education Division Policy
Committee Meeting - N233, Convention Center

3:30 PM-5:15 PM

NASBE Rap Session - N253, Convention Center

THURSDAY, DECEMBER 13

6:45 AM-8:15 AM

Business Education Division
Strategic Planning Meeting - N219, Convention Center

FRIDAY, DECEMBER 14

9:15 AM-10:15 AM

Business Education Division
Opening Session - N252, Convention Center

10:30 AM-11:30 AM

Financial Literacy for Teens: Learn
Now or Pay Later! - N255, Convention Center

BT7 — Business Technology On-line
Curriculum Guide: 2007 & Beyond - N252, Convention Center

11:45 AM-12:45 PM

Incorporating Leadership and Teambuilding
in Your Classroom - N252, Convention Center

Problem-Based Entrepreneurship Learning -
N228, Convention Center

1:00 PM-2:00 PM

Integrating Ethics Into Your IT Courses - N228,
Convention Center

2:15 PM-3:15 PM

Business Education Division Business Meeting
& Awards Celebration, - N242 Convention Center

Beyond Advisory Committees:
Engaging Partners - N252, Convention Center

Integrating Reading Strategies
into the CTE Classroom - N255, Convention Center

3:30 PM-4:30 PM

Teaching to Industry-Based Skill
Certificates in the High School Classroom:
Is it Worth the Effort? - N255, Convention Center

Integrating Your CTSO Into the Curriculum -
N252, Convention Center

SATURDAY, DECEMBER 15

7:15 AM-8:30 AM

NASBE Executive Board Meeting - Conference Room 1, Hilton

7:30 AM-8:30 AM

NATEBE Executive Board Meeting - Conference Room 2, Hilton

9:45 AM-10:45 AM

Teaching Strategies to Build a Career Technical
Business Program - N255 Convention Center

11:00 AM-12:00 PM

The Taxman Cometh: Running a High School Tax Center - **N255**, Convention Center

Why do I Need to Know Math? Strategies for Improving Math Skills Through CTE - **N252**, Convention Center

1:00 PM-2:00 PM

The Effect of Personal Experience on Adult Professional Learning in the Field of Continuous Education of Finance in Taiwan - **N255**, Convention Center

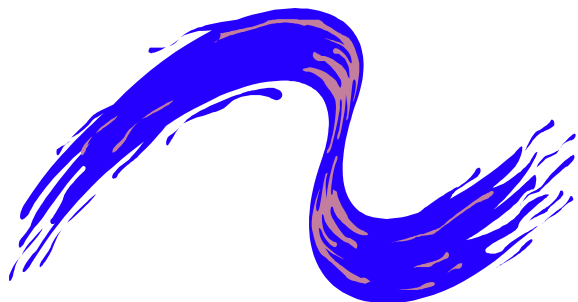
Vodcasting Essentials: You Building the Video - **N252**, Convention Center

2:15 PM-3:15 PM

NATEBE Business Meeting - **N231**, Convention Center

NASBE Business Meeting - N237, Convention Center

Assessing Your Instruction to Meet State Stan-



NASBE SOCIAL
Thursday Night
December 13, 2008

Kay Orrell is working on the social dinner we usually plan for Thursday night.

Please be sure you have paid your dues, so you may attend.

More coming soon.

In Sympathy and Remembrance
of

Jane M. Thompson
NBEA Past President
from Fiarfield, California
Who passed away
August 24, 2007

What a Loss.



WEBSITES

NASBE - www.nasbe.us
NBEA - www.nbea.org
ACTE - acteonline.org
ISBE - www.siec-isbe.org

DPE - www.dpe.org
FBLA/PBL - www.fbla-pbl.org
BPA - www.bpa.org
FFBE - www.ffbe.org
MARK-ED - www.Mark-ED.org

EDUCATION WEB SITES

DiscoverySchool
<http://www.school.discovery.com>

Kathy Schrock's Guide for Educators <http://www.school.discovery.com/schrockguide>

<http://www.school.discovery.com/schrockguide/assess.html>

<http://www.school.discovery.com/schrockguide/eval.html>

<http://www.school.discovery.com/schrockguide/gadgets.html>

Education World
<http://www.educationworld.com>

http://www.educationworld.com/a_curr/profdev066.shtml

http://www.educationalworld.com/a_curr/

Scholastic
<http://www.teacher.scholastic.com/>

<http://www.teacher.scholastic.com/products/instructor/cyberhunt.htm>

<http://www.teacher.scholastic.com/products/instructor/activities.htm>

Foundation for the Future of Business Education
<http://www.ffbe.org>

i-SAFE America Internet Safety Education Foundation
<http://www.isafe.org>

Blue Web'n
<http://www.kn.pacbell.com/wired/bluewebn/>

<http://www.kn.pacbell.com/wired/bluewebn/updates.html>

Filamentality
<http://www.kn.pacbell.com/wired/fil/>

Teachers.Net
<http://www.teachers.net>

Internet4Classrooms
<http://www.internet4classrooms.com>

<http://www.internet4classrooms.com/on-line.htm>

TeachersFirst
<http://www.teachersfirst.com>

<http://www.teachersfirst.com/matrix.htm>

<http://www.teachersfirst.com/handouts.html>

ProTeacher
<http://www.proteacher.com>

<http://www.proteacher.com/030000.shtml>

Future Business Leaders - Phi Beta Lambda, Inc.

FBLA puts leadership in action

Let the action begin! Future Business Leaders of America-Phi Beta Lambda (FBLA-PBL) members and advisers are preparing for an action-packed year as they put leadership in action through dynamic leadership conferences, competitive events, and programs. This year's theme, Leadership in Action, embodies the core essence of a future business leader and serves as the motivation for a successful year.

ACTION: Competitive Events

FBLA establishes leadership in action by aligning the FBLA Competitive Events Program, conference workshops, and national programs with the National Business Education Association (NBEA) National Standards for Business Education and the U.S. Department of Education Career Clusters. The NBEA Standards and Career Clusters serve as the foundation for FBLA member development and enrichment. Each competitive event guideline indicates specific NBEA Standards and Career Clusters.

There are several new events for the 2007–08 year. Added to the finance field is a new event in Personal Finance. In addition, Banking and Financial Systems has added a case scenario for the finalists to present to the judges.

Several new events focus on information technology—Computer Problem Solving, Help Desk, Desktop Application Programming, Internet Application Programming, and Management Information Systems. Computer Problem Solving covers A+ concepts; students participating in Help Desk will be given a role-play scenario; and for the two programming events, students will write a program in any language and then present the program to the judges at the National Leadership Conference. Management Information Systems is a team event that tests the ability to design and implement an information system solution.

In addition, FBLA has added Client Service, a role-play scenario; and modified Multimedia Presentation to Business Presentation, a presentation on a developed business topic.

Each year the FBLA National Awards Program Committee reviews the competitive event guidelines, rating sheets, and competencies, as well as recommends new proposals or modifications to the existing events.

ACTION: Educational Programs

FBLA also offers advisers innovative, educational programs to integrate into their business classrooms—making FBLA a cocurricular organization. FBLA educational partners have developed three interactive simulations aligned to the NBEA Standards and Career Clusters—simCEO, Stock Market Game, and Virtual Business Challenge.

The simCEO combines investing and business skills into the Web's only simulation in which participants create their own companies online, research each others' companies, buy/sell shares in the companies to affect share prices, and react to instructor-created news by adjusting their business and investing plan. In the Stock Market Game, students research stocks; discover how financial markers work; chose portfolios; manage budgets; follow companies in the news; and make decisions on whether to buy, sell, or hold. Over the course of fifteen weeks, members can invest a hypothetical \$100,000 in NASDAQ, AMEX, and NYSE-listed common stocks.

The FBLA Virtual Business Challenge (VBC) encourages FBLA members to test their skills at managing a distribution center individually or as a team. The VBC has two challenges during the year (fall and spring), and each challenge focuses on different business concepts.

continued on next page

FBLA-PBL, *continued*

ACTION: Leadership Conferences

This fall, members and advisers participated in the National Fall Leadership Conferences held in four cities across the nation—Birmingham, Alabama; Buffalo, New York; Cincinnati, Ohio; and Portland, Oregon. Students and advisers are involved in motivational general sessions, engaged in networking opportunities, and toured local business and corporations. Professional development and career planning workshops were designed to meet the criteria of the NBEA Standards and focused on business, career development, communications, finance, leadership, and information technology. For many FBLA-PBL members, the NFLCs are a convenient and affordable way to experience leadership in action.

FBLA-PBL remains the oldest and largest student business organization with a quarter million members and advisers in middle school, high school, and college chapters worldwide. FBLA-PBL's mission is to bring business and education together in a positive working relationship through innovative leadership and career development programs. For more information visit www.fbla-pbl.org.

Submitted by Brian Ferrell, CMP
Future Business Leaders of America-Phi Beta Lambda,
Inc.



**FBLA/PBL Student Organization
CEO Jean Buckley**



FBLA Competitive Events Photos



MARK - ED - Jim Gleason

Administrators' Leadership Conference Featured at Conclave



New for 2008, the Portland Conclave will feature a special leaders program track targeted at new supervisors and administrators (local and state).

The program is being developed on the basis of input this fall from current supervisors, and will focus on specific issues relevant to leadership in business and marketing education.

Participation is limited to employed state and local administrators (supervisors, directors, etc.) responsible for business and/or marketing education. In addition each state program leader may sponsor one or two local teachers deemed to be high-potential leaders.

Experienced administrators interested in serving as presenters and on-site mentors are strongly encouraged to contact Jim Gleason before the holidays. Program details will be available on the Conclave web site on or about December 15.

National Standards Released

MarkED's three-year initiative to revalidate Career Cluster standards (Knowledge and Skill statements) is moving into the curriculum and course-development phase. Final reports, endorsed by the CTE State Directors, are available on the MarkED web site for three Clusters: Finance, Business Management and Administration, and Marketing. Each Cluster is supported by five discrete Pathways, as follow:



Business Management and Administration

- Administrative Services
- Business Information Management
- General Management
- Human Resources Management
- Operations Management

Finance

- Accounting
- Banking Services
- Business Finance
- Insurance
- Securities and Investments

Marketing

- Marketing Communications
- Marketing Communications
- Marketing Research
- Merchandising
- Professional Sales

Industry-validated performance indicators within each Cluster and Pathway are organized into instructional areas (e.g. entrepreneurship, business law, or promotion) and leveled on a six-level tier ranging from prerequisite through management and owner.

An executive summary is available to NASBE members (Gleason@Mark-ED.org) and the complete research summary for each Cluster is available at www.Mark-ED.org (Curriculum/Teaching tab).

Initiatives presently underway include development of model Programs of Study, Course Guides (a Principles of Business course guide was released this past summer), and assessments.

June 21-25

High School of Business

MarkED's new program model is up and running at pilot sites in Ohio, Michigan, Tennessee, Texas, and West Virginia. Targeted at college-bound students who plan a business administration major, the program features six required and two optional one-semester courses:

- Leadership (grade 9, optional)
- Wealth Management (grade 9, optional)
- Principles of Business (10)
- Business Economics (10)
- Principles of Marketing (11)
- Principles of Finance (11)
- Principles of Management (12)
- Business Strategies (12)

Applications for fall 2008 rollout are now being accepted. Sites meeting selection criteria will be accepted on a first-come basis until 15 slots are filled. To ensure adequate planning time for course approvals, student recruiting and registration, and advisory group planning, December 31 is the final deadline for 2008-2009 implementation.

Contact BerkeyL@Mark-ED.org. Details at www.Mark-ED.org (Major Initiatives tab)

Technical Assessment

States interested in technical assessments anchored by the new business-based Career Cluster standards are invited to initiate a dialogue with Jim Gleason. Over the past 25 years, MarkED has developed an extensive test item bank and worked on a variety of different assessments, including those for the A*S*K Institute. Additional tools have been developed for realistic assessment. Because of its not-for-profit membership structure, costs are very reasonable – particularly to the 43-state membership base.



Mark-Ed Display at Iowa Bus. Ed. Association Convention October 12, with Colleen Hunt (Iowa Dept. of Ed. Business Consultant) and Jim Gleason, Mark-Ed



June 21-25



NATIONAL ASSOCIATION OF SUPERVISORS OF BUSINESS EDUCATION OFFICIAL NOMINATION FORM

Any member of the Association may make nominations for Career and Technical Education (ACTE) with active or affiliate membership in the National Association of Supervisors of Business Education (NASBE) for the **OUTSTANDING LEADERSHIP AWARD**. The Chairperson of the NASBE Awards Committee will contact the nominee directly for the necessary supporting materials. Nominations must be postmarked no later than **January 15**. Send by first-class mail. Please key all information.

Date _____

Nominee Name _____

Address _____

City _____ **State** _____ **Zip** _____

Telephone Numbers: Work _____ Home _____

E-Mail _____

Address _____

Position _____

Employer _____

Nominator's Name _____

Address _____

City _____ **State** _____ **Zip** _____

Telephone Numbers: Work _____ Home _____

E-Mail _____

Address _____

Position _____

Employer _____

Signature _____

Please return the completed **Nomination Form** to:

Anna Nemesh (FAX: 301-314-6877)
Director, Terp Service
5201 Paint Branch Pkway
Suite 1110
College Park, MD 20740

NATIONAL ASSOCIATION OF SUPERVISORS OF BUSINESS EDUCATION OUTSTANDING LEADERSHIP AWARD

Purpose

To encourage and reward outstanding contributions to the advancement of Business Education, especially contributions made through the National Association of Supervisors of Business Education to the development and advancement of Business Education and Career and Technical Education.

The Award

The award will be presented by citation of testimony of the recipient's contribution to the National Association of Supervisors of Business Education, Business Education and Career and Technical Education. **Selection Criteria**

The recipient of this award (or recipients, in the event the award is shared) **must** be or have been a member of ACTE/ Business Education Division, and the National Association of Supervisors of Business Education. The recipient must be a person who, in the judgment of the Selection Committee, has made an outstanding contribution to the development and advancement of business education, supervision and career and technical education.

Nature of the Contribution

The following suggested criteria may be used in reviewing the nominee's contributions:

1. Contributions made to teaching and/or administration of business education and career and technical education programs in high schools, colleges, career and technical schools, and/or business schools. **(10 points)**
2. Contributions made to the administration and supervision of business education programs. **(25 points)**
3. Contributions to business and industry, with definite implications and significance for education (membership in business community organizations) **(5 points)**
4. Contributions to the promotion of NASBE. **(30 points)**
5. Contributions to the promotion, expansion, development, and/or strengthening of ACTE/ BE DIVISION/NASBE **(20 points)**
6. Other significant professional contributions **(10 points)**

ACTE BE Division President Jean M.Kyle

Fellow ACTE members,

As I commence my three year term on the ACTE Board of Directors, let me express that it is an honor to represent you as your voice for business education on the board. While these are times of change in education, this is also a time of opportunity for business education. I look forward to this chance to work with BED members as agents of change.

The ACTE annual convention is just a few weeks away, and I hope many of you will attend. The theme this year is ***Connecting Education and Careers: December 13-15, 2007 and is held at the Las Vegas Convention Center.*** This annual opportunity offers a strong business education strand with breakout session of interest to teachers.

This year the Opening General Session features **Ruby Payne** who will share her insights on working with students in poverty. Payne has been involved with education as a teacher, principal, consultant and administrator, and is working to spread the word that children of poverty need not suffer through an educational system oblivious to their needs. She is the author of *A Framework for Understanding Poverty*.

The exhibits and trade show are an opportunity for viewing the “latest and greatest” in published materials and instructional technologies and is one of the highlights of the convention.

There is a brief BED program schedule in this newsletter. Plan to attend the sessions that appeal

to you and that meet your needs. The speakers selected have much to offer and are professionals that offer information on topics that are timely for business education.

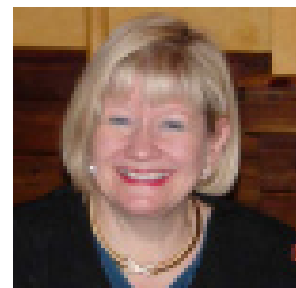
Our Business Education Division Opening Session is on Friday, December 14 from 9:15 AM – 10:15 AM and will feature a timely speaker for business education and information about the Business Education Division and our role in ACTE.

Plan to join the Business Education Division Business Meeting and Awards Celebration on Friday afternoon, from 2:15 PM - 3:15 PM. This is an opportunity to celebrate with our division award winners.

Details for conference events and registration can be done online at www.acte.online.org and there is a reduction in registration costs for ACTE members and also for early registration.

Please feel free to contact me at jean.kyle@state.mn.us with your ideas, questions and concerns.

Best regards,



National Association for Supervisors of Business Education
Officer Nomination Form

Name of candidate _____

Address of candidate _____

Street City State Zip

Telephone Number _____

Work Home

E-mail Address _____

Indicate position for which candidate is being nominated:

President-elect _____

Vice-President _____

Secretary _____

Treasurer _____

Name of nominator: _____

Address of nominator: _____

Street City State Zip

Telephone Number: _____

Work Home

ACTE BUSINESS EDUCATION DIVISION STUDENT ORGANIZATION AWARDS

Fall, 2007

Please share with all potential nominators

There are many students who are involved with career and technical education student organizations and are excellent candidates for national recognition. However, it takes someone to recognize this and to nominate these students. If you are a **current member** of the **Business Education Division of ACTE** you may nominate a student for the Student Organization Awards. **Your current membership number must be on the nomination form and will be verified.**

We will recognize secondary and post-secondary students who exceed a minimal rating for these awards. One award will be given for each region of ACTE for the secondary level and one for the post-secondary level. Please feel free to make copies of the application to share with other professionals, or contact the committee chair for additional copies.

Anna Nemesh
Director, Terp Service
5201 Paint Branch Pkway
Suite 1110
College Park, MD 20740
(FAX: 301-314-6877)

Thank you for your support of student organizations.

ACTE BUSINESS EDUCATION DIVISION OUTSTANDING BUSINESS EDUCATION STUDENTS AWARDS

CRITERIA

This award is designed to provide recognition to five secondary and five post-secondary outstanding students who have demonstrated leadership potential through enrollment in business courses and involvement in career and technical student organization activities as well as the school and community.

ELIGIBILITY

Secondary or post-secondary students must be nominated by a member of the Business Education Division of the Association for Career and Technical Education (ACTE). The nominee must be a local, state, and national student member of Business Professionals of America, Future Business Leaders of America-Phi Beta Lambda, or Pi Omega Pi at the time of the nomination. The students must be enrolled in school through December of the school year of nomination and must not possess a baccalaureate degree prior to that December. One secondary and one post-secondary student per ACTE region will be recognized.

REGULATIONS

1. The award entry form and supporting documentation for the nomination must be postmarked no later than June 1 of the current school year.
2. Members of the student organization committee of the Business Education Division of ACTE will screen the materials of the nominees.
3. Notification to the recipients of the award will be made by October 15 of the following school year.

ACTE BUSINESS EDUCATION DIVISION STUDENT ORGANIZATION AWARDS

4. The recipients of the award will be recognized at the opening session of the Business Education Division at the annual ACTE Convention in December of the school year following nomination. The recipients will be responsible for all travel expenses if they attend the ACTE convention. Attendance at the ACTE Convention by the recipients is not mandatory to receive recognition.
5. All materials must be typewritten. The following must be submitted in **one letter-size manila folder** by the postmark deadline of **June 1**:
 - Five copies (original and/or copy) of the rating sheet with nominee information block completed.
 - Five copies (original and/or copy) of the completed entry form.
 - Five copies (original and/or copy) of a **one-page letter** of application for the award from the nominee.
 - Five copies (original and/or copy) of a brief (**not to exceed two pages**) resume of the nominee.
 - Five copies (original and/or copy) of a **one-page** essay written by the nominee outlining his/her success and future career plans, and how involvement in business courses and a career and technical student organization has enhanced the student's leadership and professional development.
 - Five copies (original and/or copy) of one letter of recommendation (**not to exceed one page**) from the nominee's business education teacher or career and technical student organization local or state advisor.
 - The above materials should be **paper clipped into five sets**. One copy of each document makes up a set.
6. Photographs are not allowed. No other materials will be accepted. Materials will not be returned.
7. The nomination materials should follow the same sequence given on the rating sheet. If information is not available for a particular criterion, include a statement to that effect.
8. Judges must deduct 1 to 10 points from the scores of nominees who submit materials by the stated deadline but do not adhere to the award guidelines for the submission of proper materials.
9. Nominees failing to submit the proper materials by the stated deadline will be disqualified.
10. The letter of application, resume, and essay must be prepared by the student member — not teachers or advisors. Teachers or advisors should serve as consultants to ensure that these materials are well organized, contain substantiated statements, and are written in a business style.

PROCEDURE

Criteria for selection of the nominee should include:

- Business course(s) or program(s) in which the student is currently enrolled or has completed.
- Years of participation in career and technical student organization activities.
- Extent of participation in conferences sponsored by the local, state, and national associations of the career and technical student organization.
- Officer and committee chair positions held in the career and technical student organization.
- Participation in school and community activities.
- Awards and honors received.
- Career plans.

The materials submitted should address the above criteria.

JUDGING

There will be a panel of judges from the student organizations committee of the Business Education Division of ACTE. Judges will use the rating sheet attached to these guidelines to evaluate the materials submitted by the nominee. **Students must achieve an average rating from the judges of at least 70 points to receive the award.** All judges' decisions are

ACTE BUSINESS ED. DIVISION STUDENT ORGANIZATION AWARD ENTRY FORM

ACTE BUSINESS EDUCATION DIVISION

Entry Form for Outstanding Business Education Student Awards

ACTE Region _____ Secondary
Post-Secondary

Name _____

Complete home address _____

Name of School _____

Complete Address of School _____

Home Phone _____ School Phone _____ E-mail _____

Career and Technical Student Organization Membership:

Business Professionals of America Future Business Leaders of America-Phi Beta Lambda

Pi Omega Pi

Member of Business Education Division of ACTE Making Nomination:

Name _____ State _____

ACTE **current** membership number _____

Complete home address _____

I certify that the attached nomination materials are my own work _____

Signature of Student/Nominee

FOR OFFICE USE:

_____ Date Postmarked

- (5) entry form
- (5) letter of application
- (5) résumé
- (5) essay
- (5) letter of recommendation
- (1) letter-size manila folder

other: _____

Postmark no later than:

June 1, 2008

and send to:

Anna Nemesh (FAX: 301-314-6877)

Director, Terp Service

5201 Paint Branch Pkway

Suite 1110

College Park, MD 20740

ACTE BUSINESS ED. DIVISION STUDENT ORGANIZATION AWARD RATING SHEET

ACTE BUSINESS EDUCATION DIVISION

Outstanding Business Education Student Awards Rating Sheet

Points given may range between zero and the maximum number indicated.

BUSINESS COURSES/PROGRAMS

Business course(s) or program(s) currently enrolled/completed _____ 10

CAREER & TECHNICAL STUDENT ORGANIZATION LEADERSHIP AND INVOLVEMENT

Year(s) of membership	_____ 5	
Local office(s) holding/held	_____ 10	
State and/or national office(s) holding/held	_____ 10	
Committee chair positions(s) holding/held	_____ 10	
Attendance at state leadership conferences	_____ 5	
Attendance at national leadership conferences	_____ 5	
Participation in competitive events on the state level	_____ 5	
Participation in competitive events on the national level	_____ 5	_____ 55

OTHER LEADERSHIP ROLES

Participation in other school activities	_____ 5	
Participation in community activities	_____ 5	
Awards and honors	_____ 5	
Career plans	_____ 5	_____ 20

MATERIALS FORMAT

Information follows sequence of rating sheet	_____ 5	
Clear and concise presentation of facts with logical arrangement	_____ 5	
Correct grammar, punctuation, spelling, and acceptable business style	_____ 5	_____ 15

<i>Nominee Information</i>	
To be completed by nominee:	
Name _____	
ACTE Region _____	
Secondary <input type="checkbox"/>	Post-Secondary <input type="checkbox"/>

SCORE _____ 100

Total points deducted for not adhering to regulations _____

Final Score _____

Judge's Signature _____

MEMBERSHIP in NASBE

Please print and complete the form to be included in the NASBE Directory. Your check of \$15 for membership as an active or associate member of NASBE will be greatly appreciated.

Return to:

Colleen Hunt, NASBE Treasurer
Dept. of Ed. Consultant
12528 525th Street
Elliott, IA 51532
Phone: 515-281-0319, Fax: 515-281-6544
E-mail: Colleen.Hunt@iowa.gov



2007-2008 NASBE DIRECTORY INFORMATION FORM

Name	
Title	
Address	
City	State ZIP
Business Phone ()	Business Fax ()
Home Phone ()	Home Fax ()
E-mail Address Work:	E-mail Address Home:
Website Address:	

SUPPORT YOUR NASBE ORGANIZATION BY BECOMING A MEMBER!!

Active Members are Business Education program supervisors who are direct employees of a state, region, or local education agency. Each active member of NASBE present at the NASBE business meetings at ACTE and NBEA conventions is eligible to vote. **DUES ARE \$15.**

Associate Members are persons from the field of business who are interested in supporting the purposes of NASBE. Associate members may pay dues and become nonvoting associate members. Associate members may include student organization directors, association directors, members of the U.S. Department of Education, publishers, vendors, and former state supervisors of business education. Associate members may attend all meetings of the association and may, upon request to the presiding officer, be extended the privilege of the floor. **DUES ARE \$15. (You MUST be an ACTE member, as we are an affiliate.)**

NOTE: Membership is July 1 – June 30. To be included in directory, information must be post-

marked ASAP. After the ACTE Conference, only paid members receive corres



NASBE Membership

Membership in the Association for Career and Technical Education shall be a requirement for active membership in NASBE. There are three kinds of membership available in NASBE: *active, associate, and honorary.*

Active Members

State, regional, and local supervisors (including assistant supervisors and district supervisors with direct responsibility for program development and/or Business Education co-curricula student organizations) of multiple Business Education programs who are direct employees of a state, region, or local educational agency may become active members. Each active member of NASBE present at the NASBE Business meetings at ACTE and NBEA conventions is eligible to vote.

Associate Members

Associate members are persons from the field of business who are interested in supporting the purposes of NASBE and are members of ACTE. Associate members may pay dues and become nonvoting associate members. Associate members may include student organization directors, association directors, members of the U.S. Department of Education, publishers, vendors, and former state supervisors of Business Education. Associate members may attend all meetings of the association and may, upon request to the presiding officer, be extended the privilege of the floor.

Honorary Members

Honorary members are persons who are officially concerned with administration and supervision of vocational education as well as others, including those in the fields of vocational education, who are actively and materially assisting to encourage and to develop Business Education. Honorary members may be elected by a majority vote of the active members present at any business meeting upon proposal by the Nominating Committee. Honorary members **do not** pay dues and are **nonvoting** members.

Honorary members may attend all meetings of NASBE and may, upon request to and/or by the presiding officer, be extended the privilege of the floor. Honorary membership will be presented to the NBEA Executive Director, ACTE/BE Division Vice President, and the CEO's of Business Professionals of America and the Future Business Leaders of America/Phi Beta Lambda (effective July 1, 1995).

Membership Year



2007-2008 NASBE COMMITTEES

COMMITTEE	TERM
AWARDS	
Anna Nemesh (MD) (Chair).....	2008
Deborah Seehorn (NC)	2008
Beth Downey (VA).....	2008
BYLAWS	
Diane Carver (WA)	2008
CTE STUDENT ORGANIZATION	
Kay Orrell (CA)	2008
COMMUNICATIONS	
Barb Bielenberg(IA)	2008
DIVERSITY ACTION	
Edith Duncome (NC)	2008
LEGISLATION	
Denise Roseland (WI)	2008
MEMBERSHIP	
Colleen Hunt (IA).....	2008
NOMINATING	
Kara Burkett (TN) (Chair)	2008
Deborah Seehorn (NC)	2008
Abby Reynolds (WV).....	2008
OPERATING POLICIES	
Sara Vielma (CA).....	2008
POLICY AND PLANNING	
Kara Burkett (TN) and Lee Marcoux (CT).....	2008
PROFESSIONAL DEVELOPMENT	
Deborah Seehorn (NC)	2008
PROGRAM LEADERSHIP	
To be announced.....	2008
RESOLUTIONS	
To be announced.....	2008
NEW IDEAS	
Paggie McSpadden (AL).....	2008
PUBLIC INFORMATION COMMITTEE	
Janet Gandy (AZ)	2008
PARLIAMENTARIAN	
Maurice Henderson (MI)	2007
<i>Other Ad Hoc Committees</i>	
BROCHURE	
Kelly Scholl (ND).....	2007
HANDBOOK	
Kara Burkett (TN).....	2007

MEETING ANNOUNCEMENTS

ACTE - Dec. 13-15, 2007 - Las Vegas, NV

Dec. 4-6, 2008 - Charlotte, NC

NBEA - March 19-22, 2008 - San Antonio,

TX

April 8-11, 2009 - Chicago, IL

March 31-April 3, 2010 - San Diego, CA

April 20-23, 2011 - New Orleans, LA

April 4-7, 2012 - Boston, MA

ISBE - July 27-Aug. 1, 2008 - Waterford,

Ireland

NCBEA - October 3-4, 2008 - Grand Rap-

ids, MI

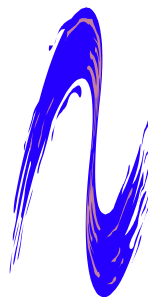
MPBEA - June 18-21, 2008 - Lincoln, NE

SBEA - October 24-27, 2007 - Little Rock,

AR

NEWSLETTER EDITOR

Barbara J. Bielenberg
Head Teacher, Business Education
Sioux City Community Schools
1121 Jackson Street
Sioux City, IA 51055
E-mail: bielenb@sioux-city.k12.ia.us
or bielenb46@yahoo.com
Phone: 712-279-6644
Fax: 712-279-6747



NASBE OFFICERS AND INFORMATION

2007-2008 NASBE OFFICERS



New Officers, from left: Kara Burkett (TN), Past President, Lee Marcoux (CT), President; Denise Roseland (WI) President-Elect; Mabel Burchfield, Secretary (not pictured, Colleen Hunt, Treasurer)

RENEWAL OF DUES

August is the time to renew your membership in NASBE and ACTE.

NASBE is your organization, and it needs your support and input. Be an active participant. Renew your membership and make the commitment that we all work together in making NASBE a strong affiliate of the BE Division of ACTE.

An application form is included in this newsletter. **You MUST be an ACTE member.**



PRESIDENT.....**Lee Marcoux**
Business & Finance Technology Education Consultant
165 Capitol Avenue, Room #363
Hartford, CT 06106
Office Phone: 860.713.6768; Fax: 860.713.7049
lee.marcoux@ct.gov

PRESIDENT -ELECT.....**Denise Roseland**
Business & Information Technology Consultant
Business and Ed Information Systems
Wisconsin Department of Public Instruction
P. O. Box 7841, Madison, WI 537077841
Office Phone: 608.266.2348; Fax: 608.267.9275
denise.roseland@dpi.state.wi.us

VICE PRESIDENT.....**Kay Orell**
Project Manager, Bus. Ed. Tech. Prep. Resources Consortium
800 S. College Dr., Santa Maria, CA 93454
Office Phone: 805.922-6966; Fax: 805.349-9594
korrell@hancockcollege.edu

SECRETARY**Mabel Burchfield**
Instructional Supervisor, Memphis City Schools
Division Careers, Technical and Adult Ed.
Bond Building
2930 Airways Blvd., Memphis, TN 38116
Office Phone: 901.416-8045; Fax: 901.416.7543
burchfieldm1@mcsk12.net

TREASURER.....**Colleen Hunt**
Iowa Dept. of Education Consultant
Business & Information Technology
12528 525th Street, Elliott, IA 51532
Phone: 515.281.0319, Fax: 515.281.6544
Colleen.Hunt@iowa.gov

PAST PRESIDENT.....**Kara Burkett**
Tennessee Department of Education
4th Floor - Andrew Johnson Tower
710 James Robertson Pkwy
Nashville, TN 37243-0383
615.532.2845 Office; 615.532.8226 Fax
kara.burkett@state.tn.us or 4kb@bellsouth.net

ACTE Wants Your E-mail Address

ACTE is trying to obtain the year-round e-mail addresses for all members. In order to provide you with additional membership services, they need this information. E-mail is the quickest and sometimes most convenient way for people to communicate. Make sure you contact ACTE at 1-800-826-9972 for additional details.

The *Career Tech Update* Newsletter is now being published in an e-mail format. This newsletter will be free to all ACTE members starting in 2003. This is yet another reason to make sure ACTE has your e-mail address.

Visit the **Lesson Plan Library** at ACTE website for Business Lesson Plans:

http://www.acteonline.org/resource_center/lpl/busi.cfm

Please submit articles for the next issue of the NASBE Newsletter, and attach a picture of yourself (digital or scanned)

NASBE Website: (Thanks to Barb Beadle, Indiana D.E.) <http://www.nasbe.us>

The next **deadline** is:

January 11, 2008
for February, 2008 publication

April 4, 2008
for May, 2008 publication

October 10, 2008
for November, 2008 publication

Subscribe to the NASBE LISTSERV

Do you need to keep in touch with fellow business education supervisors? Do you have good information you want to share with your colleagues? Then use the NASBE Listserv as a way to reach all your fellow business education supervisors.

If you have not signed up for the listserv, please send an e-mail message to maurice.henderson@emich.edu indicating that you would like to subscribe to the listserv.

If you are subscribed, and once you have subscribed, you can send a message that will reach all members subscribed to the list by sending an e-mail message to: nasbe@s-listserv.thomsonlearning.com. E-mail address changes for the listserv should be sent to maurice.henderson@emich.edu.

Don't miss out on sharing and receiving valuable information that can assist you.

"Please note that attachments of any kind are not accepted through the listserv. Sending a message with an attachment will cause the message to be rejected and not sent without receiving any type of rejections message.

Also, as a subscriber to the listserv, you will also receive a copy of any messages that you send. This can be used to confirm that your message was sent. If you don't get a copy of your message, then your message was not successfully transmitted."

Las Vegas Hilton Hotel

